



## In-ground Trampoline Lighting System - Colour Controlled



### Installation Manual & Safety Instructions

**WARNING:** Read these installation instructions carefully before attempting to assemble or use this product. Keep this guide in a safe place for future reference.

If you have a problem installing your lights, please call us on 01276 855600

## PARTS LIST

### PART A MAINS POWER LEAD



(connected to green mains connector)

**QTY: 1**

### PART B LED LIGHT STRIP KIT



(includes transformer, white remote "receiver" box and 2 x LED flexible strips)

**QTY: 1**

### PART C M6 ROSS-HEAD SCREWS



(to attach the  
transformer & fixing  
clips)

**QTY: 40**

### PART D PLASTIC FIXING CLIPS



(to attach the receiver  
box and LED flexible  
strips)

**QTY: 40**

### PART E REMOTE CONTROL



**QTY: 1**

## SAFETY



### WARNING:

IT IS IMPORTANT THAT YOU ADHERE TO THESE SAFETY GUIDELINES FOR SAFE AND PROPER USE OF THE CAPITAL IN0GROUND TRAMPOLINE LIGHTING SYSTEM - COLOUR CONTROLLED.

- Use of the trampoline during darkness must only be with responsible adult supervision and with permission of an adult.
- Only an adult must connect and disconnect the LED light system to a temporary mains socket supply.
- An adult must ensure that the temporary supply socket extension is at least 2 metres away from the edge of the trampoline.
- YOU MUST UNRAVEL THE LED LIGHT STRIPS before connecting your lights to an electrical power source.
- Before use of the trampoline, children must be made aware of the location of the power lead cable on the outside of the trampoline.
- The power lead and connection to the low voltage LED light strips should be positioned well away from the normal entry point of the trampoline.
- Ensure the surrounding area to the trampoline is free from any hazardous objects that may cause injury.
- Do not use lighting system when it is raining or wet or if there is a forecast for rain. If it starts to rain when the trampoline lights are in use, immediately cease jumping and turn off the lights and disconnect the system. (This only applies if you are using a temporary socket extension lead, as opposed to hard wiring).
- The recommended age is 6 + years.
- Empty your pockets before using the trampoline.
- Do not eat food, sweets or chew gum when bouncing.
- Do not wear shoes, boots or trainers on the trampoline.
- Do not take sharp objects on to the trampoline.
- Never consume alcohol whilst using the trampoline.
- Always jump in the middle of the jump mat.
- To stop bouncing safely, bend your knees as you touch down on the trampoline.
- Do not jump off the jump mat - always walk on and off. Do not jump from other items onto the trampoline.
- Limit the time of continuous usage (make regular stops).
- Misuse and abuse of the trampoline is dangerous and can result in serious injury.
- For general safety advice for safe use of your trampoline, consult your trampoline manual.

## ASSEMBLY:

### BEFORE YOU START:

These instructions relate to the use of the In-ground Trampoline Lighting System - Colour Controlled with a temporary extension lead coming from your house or outside power point. The Power Cable (Part A) connects into the system via the green mains connector at the end of the power cable.

The system can be hard-wired into your house so that the lights can be activated by a switch inside your house or shed. In this case you should discuss this with your electrician who will be able to install a weatherproof electrical enclosure under the trampoline pads and run an armoured cable up to your house under the ground. In this case you do not need the Power Cable (Part A).

The transformer and LED Light Strip Kit attaches to the inner retaining wall of your trampoline. You should decide where you want to attach the transformer and connecting lead. We recommend this is on the opposite side of the trampoline to where you normally access the trampoline. This minimises the chance of the Power Lead (Part A) forming a trip hazard or impediment.

### Step 1, Attaching the transformer box:

Use two of the M6 cross-head screws (Part C) to attach the transformer into the retaining wall in a horizontal position between the upper and lower trampoline frame sections.



## Step 2, attaching the remote receiver box:

Find the Plastic Fixing Clips (Part D) and peel off the backing tape of each fixing clip as you use it. Position one fixing clip either side of the small white receiver box in order to secure the box to the wall by the cable on either side. Make sure the fixing tab on the left of the box has it's tail facing horizontally and the fixing tab on the right of the box has it's tail facing upwards.

**Note:** Before attaching the cable at either side of the receiver box, insert an M6 screw through the fixing clip and into the retaining wall, this will ensure the fixing clip is firmly and permanently attached to the wall.



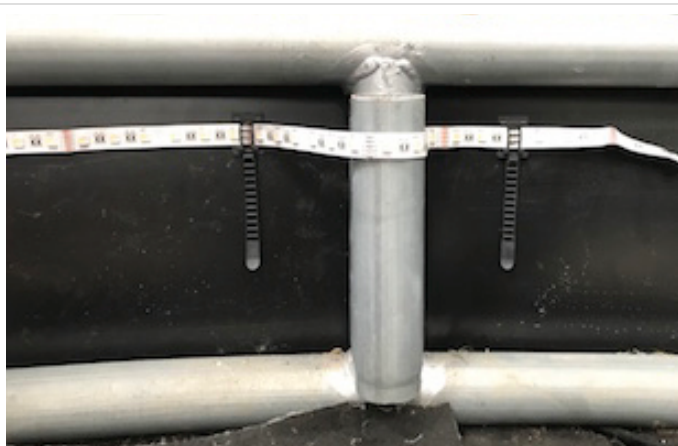
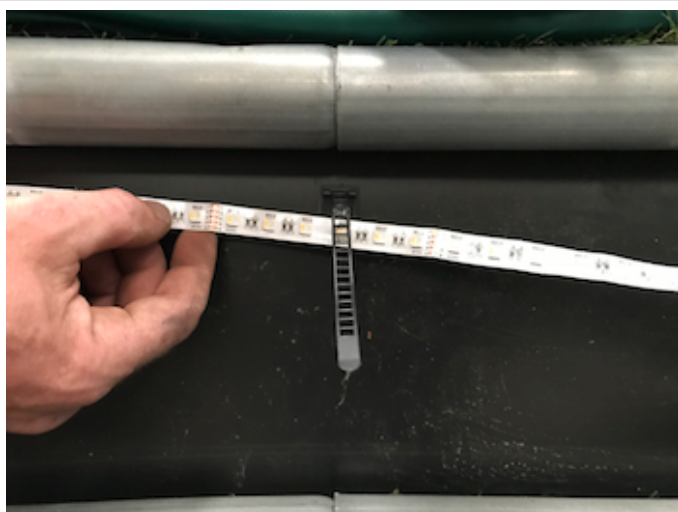


### Step 3, attaching the LED Strips:

There are 2 lengths of LED strips which are attached to your transformer and should be attached in opposite directions around the trampoline away from the transformer. These are attached to the inside retaining wall in the same way that the receiver box wires are attached; using the fixing clips.

Position 3 fixing clips between each section of trampoline frame directly onto the retaining wall, using the sticky side to position them and then screw to secure them. The tail of the fixing clips should face upwards.

Lay the LED strips across the fixing clips beneath the fixing tail, then thread the tail through locking the plastic section at the bottom and tighten.



You will need to position a fixing clip either side of each frame section so that the LED strip is secured around the steel upright section.

**Note:** On larger size trampolines the LED strips should virtually go all the way around the trampoline frame. For smaller size trampolines the LED light strips may need to cross over/overlap at the ends:



#### Step 4, Securing and using the power lead:

On the mains side of the transformer you have a flying lead with a green power connector (Part A). The lead should also be attached to the wall using a fixing clip so as to prevent the connector from lying on the shelf of the trampoline hole. This will prevent any water or dirt affecting the connector. In addition there is a cap for the connector when the lights are not in use.

Plug the Mains Power Lead (Part A) into your socket extension and connect to the transformer. Use the crew cap to tighten and lock the two connectors together.

Switch the lights on!

#### Step 5, Operating your colour-changing lights remote control (part E):

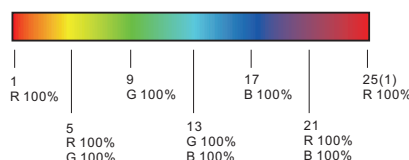
##### Remote function



: Turn on/off light.

: Touch to change static RGB color.

: Short press get 24 kinds static RGB color, long press for continuous static color adjustment.



: Short press run next dynamic mode, long press 2s run mode-cycle.

: For dynamic RGB mode, adjust speed, short press 10 levels, long press 2s get the default speed. For static RGB color, adjust saturation, namely change current static RGB color to mixed white slowly, short press 11 levels, long press 1-6s for continuous 256 levels adjustment.

: Adjust brightness, short press 10 levels, long press 1-6s for continuous 256 levels adjustment.

: Short press get red, green or blue color directly. long press 1-6s to adjust R/G/B brightness continuously to achieve millions of colors.

: Short press turn on/off W channel, long press 1-6s to adjust W brightness continuously, namely change saturation by add white color slowly.

: Short press recall the scene, long press 2s save current color into S1/2/3/4.

- \* When turn on light, the indicator display blue. when turn off light, the indicator display red.
- \* When touch the color wheel, the indicator will display the same color.
- \* When press or touch operation is invalid (If the light is off), the indicator display red.
- \* To extend battery life, no touch or press key operation after a few seconds, the touch wheel will enter sleep state, you need press any key to make touch wheel quit sleep state.

**Note:** you do not need to have the trampoline in view of your remote control in order to control the settings on your lights.

The remote control must remain indoors whilst not in use.

Tested & Inspected:	Name:	
	Signature:	
	Date:	